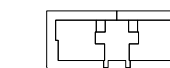
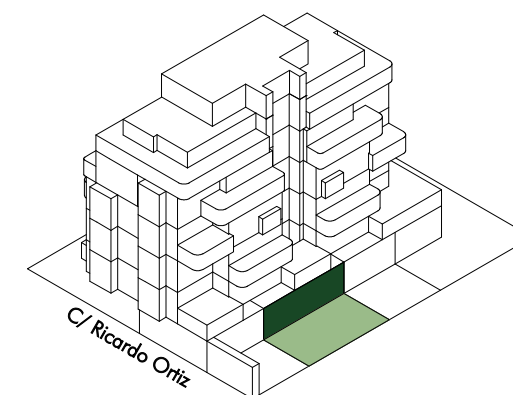
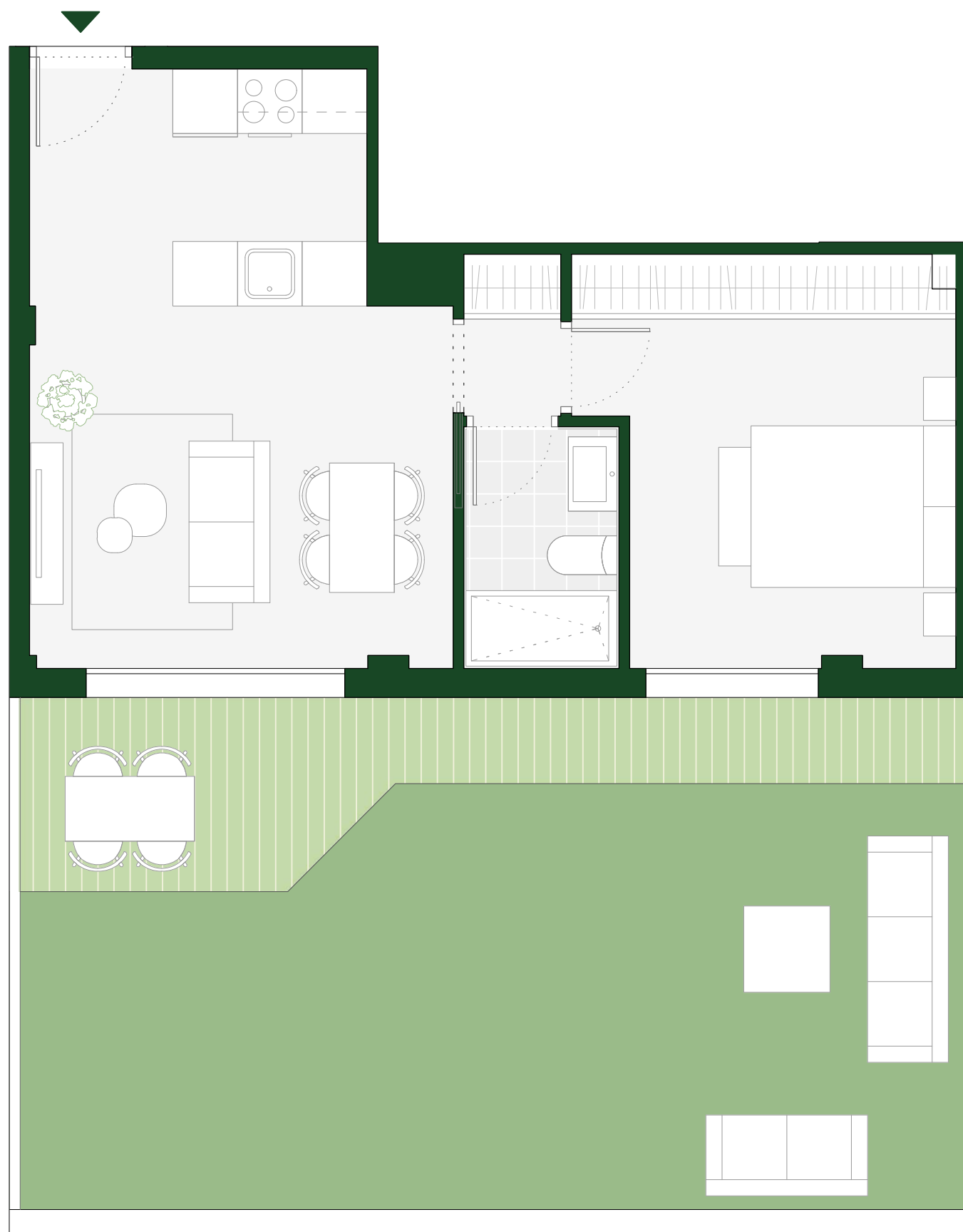


Bajo B

LOCALIZACIÓN EN PLANTA



P5



P4



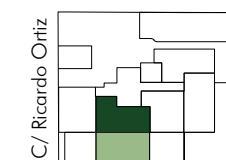
P3



P2



P1



PB

SUPERFICIES

SUP. ÚTIL CERRADA VIVIENDA	37.10 m ²
SUP. ÚTIL EXTERIOR VIVIENDA	41.66 m ²
SUP. ÚTIL TOTAL	78.76 m²
SUP. CONSTRUIDA CERRADA VIVIENDA	43.10 m ²
SUP. CONSTRUIDA EXTERIOR VIVIENDA	44.25 m ²
SUP. CONSTRUIDA TOTAL	87.35 m²
SUP. CONST. TOTAL CON ZZ.CC.	73.32 m²
SUP. TRASTERO	5.31 m ²

